



TEST REPORT

Test information

Applicant	: Simple Symbol Ltd.
Address	: RM 511 - 4, HUNGHOM COMM. CTR., TOWER A, 39 MA TAU WAI RD., HUNGHOM, KLN., H.K.
Sample Description	: Suction Cup.
Po #	: 6958, 7252.
Style #	: G14875, G89672.
Buyer	: INVENTORY LIQUIDATORS, CORP.
Country of origin	: China.
Export to	: USA.
Receiving Date	: March 01, 2023.
Test period	: March 01, 2023.~March 03, 2023.
Test Requested	: Tests requested in accordance to client requirement.

<u>TEST ITEMS</u>	<u>CONCLUSION</u>
Total lead content - California proposition 65- Superior Court of California- County of Alameda Case No. RG 10-545680/ RG-10-545687	PASS
Total Cadmium(Cd) Content - California Proposition 65- Superior Court of California- County of Alameda Case No. RG 10-514803.	PASS
Phthalates Content - California Proposition 65 – Superior Court of California – County of San Francisco Case No.CGC-10-497729/CGC-10-498981 & CPSIA	PASS

Signed for and on behalf of
RTS TEST CO., LTD. (Zhejiang)




BINBIN ZOU

Approved Signatory



Scan to follow us



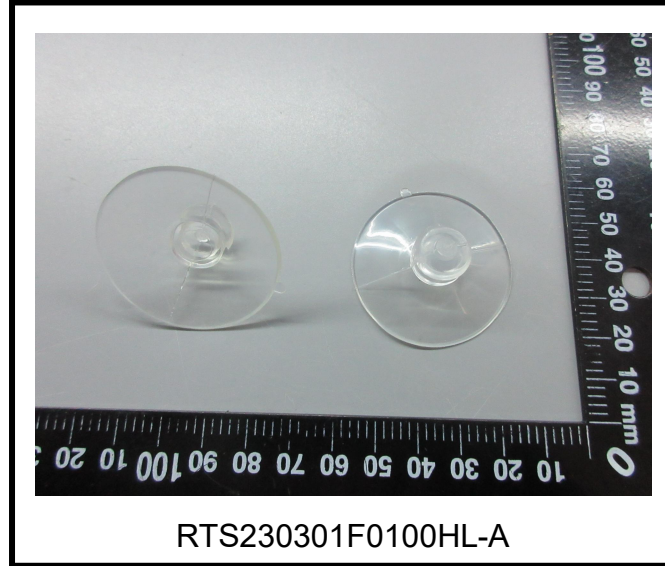
Scan for authenticity

Zhejiang RTS Test Co., LTD.

Phone: +86(0)579-85640080.
 Email: ruiyi-9@zj-rt.com
[Http://www.rtslab.com](http://www.rtslab.com)
 浙江省义乌市稠江街道英才创业园B区7幢2-4层.
 2-4f, Building 7, Block B, Ying cai Business Park,
 Choujiang Street, Yiwu, Zhejiang.

This Test Report is issued by the Company subject to its General Conditions of Service printed overleaf or available on request. Attention is drawn to the limitation of liability ,indemnification and jurisdictional policies defined therein .The results shown in this Test report refer only to the sample(s) tested unless otherwise stated This test report shall not be reproduced ,except in full, without written approval of the Company. If in doubt, please write an email. Reports without the CMA mark are not used as proof of domestic social justice data

Sample image:



**Test result:****A. Total lead content:** (Unit: mg/kg)California Proposition 65- Superior Court of California- County of Alameda Case No. **RG 10-545680 / RG-10-545687.****Test method:**

Metal- CPSC-CH-E1001-08.3; Nonmetal- CPSC-CH-E1002-08.3; Surface coating- CPSC-CH-E1003-09.1, Was analyzed by flame atomic absorption spectrometry (AAS) or Inductively Coupled Plasma Optical Emission Spectrometer (ICP-OES).

Test Number	Item/ component description(s)
A1	Transparent plastic Suction Cup

Test item	Test Number	MDL	Test Result	Maximum permissible limit	Conclusion
Lead (Pb)	A1	5	N.D.	200	PASS

Note:

- 1) MDL=Method Detection Limit.
- 2) N.D. = not detected, less than MDL.
- 3) Paints and surface coatings shall not exceed 90 ppm (0.009%) total lead content.
- 4) Substrates shall not exceed 200 ppm (0.020%) total lead content.
- 5)“▲” = This data is obtained from composite testing on more than one materials or shapes, it is possible that result obtained from individual testing on any one of the materials is substantially higher. Please be cautious when using this data for compliance evaluation.

Remark:Zhejiang RTS Test Co.,Ltd. Is the US (CPSC) Accredited Third Party Testing Laboratory, [LAB ID: 1422](#), Shall refer to:<https://www.cpsc.gov/cgi-bin/LabSearch/ViewDetail.aspx?ReqId=7%2bFdY2oZNSUVU5mvbl6jQA%3d%3d&LabId=CJaa18d5DKIPqgie8zcyrw%3d%3d>



B. Total Cadmium(Cd) content: (Unit: mg/kg)

California Proposition 65- Superior Court of California- County of Alameda Case No. RG 10-514803

Test method: RTS-ZY-008 As per Metal - CPSC-CH-E1001-08.3; Nonmetal - CPSC-CH-E1002-08.3; Surface coating - CPSC-CH-E1003-09.1, Was analyzed by flame atomic absorption spectrometry(AAS) or Inductively Coupled Plasma Optical Emission Spectrometer (ICP-OES).

Test Number	Item/ component description(S)
A1	Transparent plastic Suction Cup

Test item	Test Number	MDL	Test Result	Maximum permissible limit	Conclusion
Cadmium (Cd)	A1	5	N.D.	300	PASS

Note:

- 1) MDL=Method Detection Limit.
- 2) N.D. = not detected, less than MDL.
- 3) Product shall not exceed 300 ppm (0.030%) total cadmium content.
- 4)“▲” = This data is obtained from composite testing on more than one materials or shapes, it is possible that result obtained from individual testing on any one of the materials or shapes is substantially higher. Please be cautious when using this data for compliance evaluation.



C. Phthalates content test: (Unit: mg/kg)

California Proposition 65- Superior Court of California- County of San Francisco Case No.CGC-10-497729/CGC-10-498981 & CPSIA.

Test method: With reference to CPSC-CH-C1001-09.4, was analyzed by Gas Chromatograph-Mass Spectrometer (GC-MS).

Test Number	Item/ component description(s)
A1	Transparent plastic Suction Cup

Test Item(s)	CAS No.	Results A1	MDL	Limit value
Dibutyl Phthalate(DBP)	84-74-2	N.D.	50	1000
Benzylbutyl Phthalate(BBP)	85-68-7	N.D.	50	1000
Bis-(2-ethylhexyl)Phthalate(DEHP)	117-81-7	94	50	1000
Di-iso-nonyl Phthalate(DINP)	28553-12-0	N.D.	50	1000
Di-n-octyl Phthalate(DNOP)	117-84-0	N.D.	50	1000
Diisodecyl Phthalate(DIDP)	26761-40-0 & 68515-49-1	N.D.	50	1000
Di-n-hexyl Phthalate(DNHP)	84-75-3	N.D.	50	1000
Conclusion	-	PASS	-	-

Note:

- 1) N.D. = not detected, less than MDL.
- 2) MDL = Method Detection Limit.
- 3)“▲” = This data is obtained from composite testing on more than one materials or shapes, it is possible that result obtained from individual testing on any one of the materials or shapes is substantially higher. Please be cautious when using this data for compliance evaluation.

----- End of Report -----

Zhejiang RTS Test Co., LTD.

Phone: +86(0)579-85640080.
 Email: ruiyi-@zj-rt.com
[Http://www.rtslab.com](http://www.rtslab.com)
 浙江省义乌市稠江街道英才创业园B区7幢2-4层.
 2-4f, Building 7, Block B, Ying cai Business Park,
 Choujiang Street, Yiwu, Zhejiang.

This Test Report is issued by the Company subject to its General Conditions of Service printed overleaf or available on request. Attention is drawn to the limitation of liability ,indemnification and jurisdictional policies defined therein .The results shown in this Test report refer only to the sample(s) tested unless otherwise stated This test report shall not be reproduced ,except in full, without written approval of the Company. If in doubt, please write an email.