



# TEST REPORT

OVERALL RATING	
×	PASS
	FAIL

## Test information

<b>Applicant</b>	:	NINGBO SHIMATONG INTERNATIONAL CO.,LTD.
<b>Address</b>	:	Room 1203, Building 004, 495 Jiangdong North Road, Yinzhou District, Ningbo City, Zhejiang Province.
<b>Sample Description</b>	:	Chenille stems.
<b>PO #</b>	:	Not provided.
<b>Style #</b>	:	Not provided.
<b>Country of origin</b>	:	China.
<b>Export to</b>	:	Not provided.
<b>Buyer</b>	:	Not provided.
<b>Receiving Date</b>	:	January 30, 2023.
<b>Test period</b>	:	January 30, 2023.~February 03, 2023.
<b>Test Requested</b>	:	Tests requested in accordance to client requirement.

TEST ITEMS	CONCLUSIONS
ASTM F963-17 4.3.5.2 - Toy Substrate Materials	PASS
CPSIA Section 101-Total Lead(Pb) in Children's Product	PASS
Cadmium(Cd) test - Client's requirement	PASS
CPSC 16 CFR PART 1307-Phthalates Content test	PASS

Signed for and on behalf of  
RTS TEST CO., LTD.(Zhejiang)



CHANGBIAO YU

BINBIN ZOU

Approved signatory



Scan to follow us



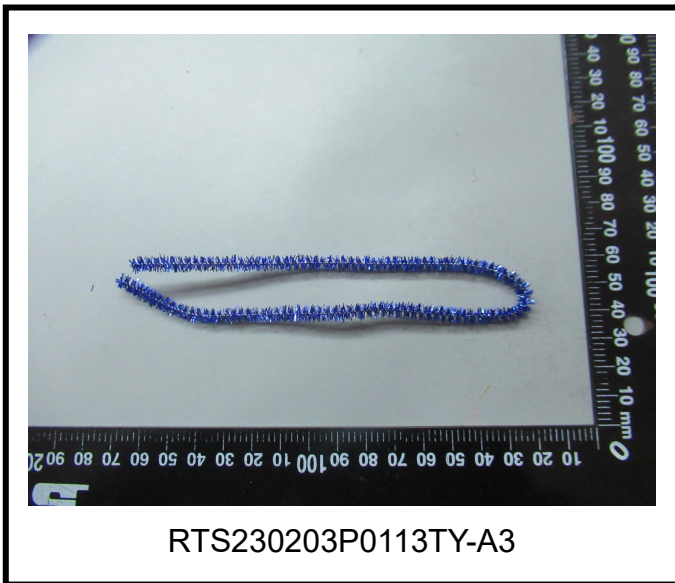
Scan for authenticity

Zhejiang RTS Test Co., LTD.

Phone: +86(0)579-85640080  
Email: [ruiyi-8@zj-rt.com](mailto:ruiyi-8@zj-rt.com)  
<http://www.irtslab.com>  
浙江省义乌市稠江街道英才创业园B区7幢2-4层,  
2-4/f, Building 7, Block B, Ying cai Business Park,  
Choujiang Street, Yiwu, Zhejiang.

This Test Report is issued by the Company subject to its General Conditions of Service printed overleaf or available on request. Attention is drawn to the limitation of liability ,indemnification and jurisdictional policies defined therein .The results shown in this Test report refer only to the sample(s) tested unless otherwise stated This test report shall not be reproduced ,except in full, without written approval of the Company. If in doubt, please write an email.Reports without the CMA mark are not used as proof of domestic social justice data.

**Sample image:**



Test Number	Item/ component description(s)
A1	Yellow plastic sheet
A2	Silvery plastic sheet
A3	Blue plastic sheet
A4	(green & red & purple) plastic sheet

**Test result:****A. Soluble Heavy Metal Content in Substrate Material:** (Unit: mg/kg)

Standard Consumer Safety Specification For Toy Safety, ASTM F963-17 Clause 4.3.5.2.

**Test method:** With reference to ASTM F963-17 (Clause 8.3.5)-Soluble elements Test method, Analysis was performed by Inductively Coupled plasma atomic emission spectrometer (ICP-OES)

Test Number	Item/ component description(s)
A1	Yellow plastic sheet
A2	Silvery plastic sheet
A3	Blue plastic sheet

Element(s)	Pb	Cd	Cr	Ba	As	Hg	Se	Sb	Conclusion
Limit(s)	90	75	60	1000	25	60	500	60	
Test Number	Test result(s)								
A1	N.D.	N.D.	N.D.	N.D.	N.D.	N.D.	N.D.	N.D.	PASS
A2	N.D.	N.D.	N.D.	N.D.	N.D.	N.D.	N.D.	N.D.	PASS
A3	N.D.	N.D.	N.D.	N.D.	N.D.	N.D.	N.D.	N.D.	PASS

**Note:**

- 1) MDL=Method Detection Limit.
- 2) N.D. = not detected, less than 2.5 (As)、5(Cr.Sb.Cd.Pb)、2(Hg)、10(Ba.Se) .
- 3)“▲” = This data is obtained from composite testing on more than one materials or shapes, it is possible that result obtained from individual testing on any one of the materials or shapes is substantially higher. Please be cautious when using this data for compliance evaluation.



**B. Total Lead in Substrate Materials:** (Unit: mg/kg)

Section 101 of the Consumer Product Safety Improvement Act of 2008 (CPSIA) (pdf) (Public Law 110-314), as modified by H.R. 2715 (Public Law 112-28, August 12, 2011) and in section 2(q)(1) of the Federal Hazardous Substances Act (pdf), 15 U.S.C. § 1261(q)(1) (FHSA).

**Test method:** Metal – CPSC-CH-E1001-08.3; Nonmetal- CPSC-CH-E1002-08.3, Was analyzed by flame atomic absorption spectrometry(AAS) or Inductively Coupled Plasma Optical Emission Spectrometer (ICP-OES).

Test Number	Item/ component description(s)
A4	(green & red & purple) plastic sheet

Test item	Test Number	MDL	Test Result	Maximum permissible limit	Conclusion
Lead (Pb)	A4▲	5	N.D.	100	PASS

**Note:**

- 1) MDL=Method Detection Limit.
- 2) N.D. = not detected, less than MDL.
- 3) Any substrate material, that is not more than 100ppm lead by weight.
- 4)“▲” = This data is obtained from composite testing on more than one materials or shapes, it is possible that result obtained from individual testing on any one of the materials or shapes is substantially higher. Please be cautious when using this data for compliance evaluation.



**C. Cadmium(Cd) content test:** (Unit: mg/kg)

**Test method:** RTS-ZY-008 As per Metal- CPSC-CH-E1001-08.3; Nonmetal- CPSC-CH-E1002-08.3 or Surface coating- CPSC-CH-E1003-09.1, Was analyzed by flame atomic absorption spectrometry(AAS) or Inductively Coupled Plasma Optical Emission Spectrometer (ICP-OES).

Test Number	Item/ component description(s)
A4	(green & red & purple) plastic sheet

Test item	Test Number	MDL	Test Result	Client's limit	Conclusion
Cadmium (Cd)	A4▲	5	N.D.	100	PASS

**Note:**

- 1) MDL=Method Detection Limit.
- 2) N.D. = not detected, less than MDL.
- 3)“▲” = This data is obtained from composite testing on more than one materials or shapes, it is possible that result obtained from individual testing on any one of the materials is substantially higher. Please be cautious when using this data for compliance evaluation.

**D. Phthalates Content Test:** (Unit: mg/kg)

Consumer Product Safety Commission (CPSC)16 CFR PART 1307 Prohibited children's toys and child care articles shall not contain more than 0.1% of any of the specified phthalates.

**Test method:** With reference to CPSC-CH-C1001-09.4, was analyzed by Gas Chromatograph-Mass Spectrometer (GC-MS).

Test Number	Item/ component description(s)
A4	(green & red & purple) plastic sheet

Test Item(s)	CAS No.	Results A4▲	MDL	Limit value
Dibutyl Phthalate(DBP)	84-74-2	N.D.	50	1000
Benzylbutyl Phthalate(BBP)	85-68-7	N.D.	50	1000
Bis-(2-ethylhexyl)Phthalate(DEHP)	117-81-7	N.D.	50	1000
Di-iso-nonyl Phthalate(DINP)	28553-12-0	N.D.	50	1000
Diisobutyl phthalate (DIBP)	84-69-5	N.D.	50	1000
Dipentyl phthalate (DPENP)	131-18-0	N.D.	50	1000
di-n-Hexyl phthalate (DHEXP)	84-75-3	N.D.	50	1000
Dicyclohexyl phthalate (DCHP)	84-61-7	N.D.	50	1000
<b>Conclusion</b>	-	PASS	-	-

**Note:**

- 1) N.D. = not detected, less than MDL.
- 2) MDL = Method Detection Limit.
- 3)“▲” = This data is obtained from composite testing on more than one materials or shapes, it is possible that result obtained from individual testing on any one of the materials or shapes is substantially higher. Please be cautious when using this data for compliance evaluation.

----- End of Report -----

**Zhejiang RTS Test Co., LTD.**

Phone: +86(0)579-85640080  
 Email: [ruiyi-8@zi-rt.com](mailto:ruiyi-8@zi-rt.com)  
<http://www.irtslab.com>  
 浙江省义乌市稠江街道英才创业园B区7幢2-4层.  
 2-4/f, Building 7, Block B, Ying cai Business Park,  
 Choujiang Street, Yiwu, Zhejiang.

This Test Report is issued by the Company subject to its General Conditions of Service printed overleaf or available on request. Attention is drawn to the limitation of liability ,indemnification and jurisdictional policies defined therein .The results shown in this Test report refer only to the sample(s) tested unless otherwise stated This test report shall not be reproduced ,except in full, without written approval of the Company. If in doubt, please write an email.