



TEST REPORT

Test information

Applicant	:	Ningbo Home-Dollar Imp.& Exp.Corp.
Address	:	69 Guangyuan Road, Jiangbei District, Ningbo,China.
Sample Description	:	CHALK SIDEWALK JUMBO 9CT.
PO #	:	Not provided.
Style #	:	G16672.
Country of origin	:	China.
Export to	:	USA.
Buyer	:	REGENT PRODUCTS CORP.
Receiving Date	:	July 14, 2022.
Test period	:	July 14, 2022.~July 14, 2022.
Test Requested	:	Tests requested in accordance to client requirement.

<u>TEST ITEMS</u>	<u>CONCLUSIONS</u>
Total Lead(Pb) in Children's Product - CPSIA Section 101	PASS

Signed for and on behalf of
RTS TEST CO., LTD. (Zhejiang)

BINBIN ZOU

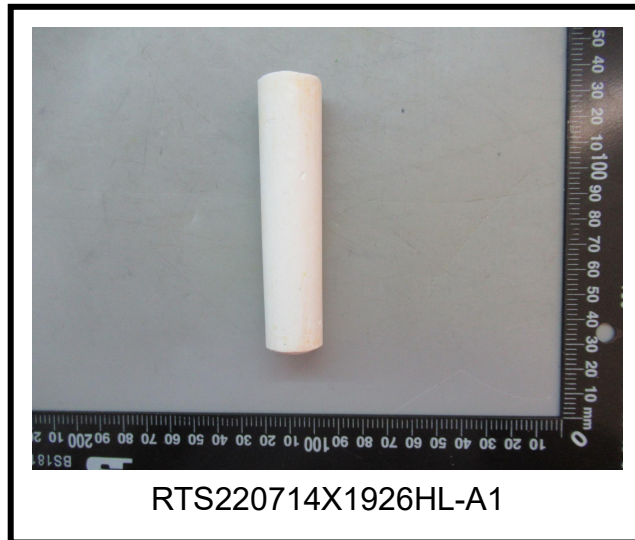
Approved signatory

Zhejiang RTS Test Co., LTD.

Phone: +86(0)579-85640080
Email: ruiyi-9@zj-rts.com
[Http://www.rtslab.com](http://www.rtslab.com)
浙江省义乌市稠江街道英才创业园B区7幢2-4层,
Choujiang Street, Yiwu, Zhejiang.

This Test Report is issued by the Company subject to its General Conditions of Service printed overleaf or available on request. Attention is drawn to the limitation of liability ,indemnification and jurisdictional policies defined therein .The results shown in this Test report refer only to the sample(s) tested unless otherwise stated This test report shall not be reproduced ,except in full, without written approval of the Company. If in doubt, please write an email.Reports without the CMA mark are not used as proof of domestic social justice data.

Sample image:



Finished product image:





Test result:

A. Total Lead in Substrate Materials: (Unit: mg/kg)

Section 101 of the Consumer Product Safety Improvement Act of 2008 (CPSIA) (pdf) (Public Law 110-314), as modified by H.R. 2715 (Public Law 112-28, August 12, 2011) and in section 2(q)(1) of the Federal Hazardous Substances Act (pdf), 15 U.S.C. § 1261(q)(1) (FHSA).

Test method:

Metal - CPSC-CH-E1001-08.3., Nonmetal - CPSC-CH-E1002-08.3.,

Was analyzed by flame atomic absorption spectrometry (AAS) or inductively coupled plasma spectrometer (ICP-OES).

Test Number	Item/ component description(s)
A1	White chalk

Test item	Test Number	MDL	Test Result	Maximum permissible limit	Conclusion
Lead (Pb)	A1	5	N.D.	100	PASS

Note:

- 1) MDL=Method Detection Limit.
- 2) N.D. = not detected, less than MDL.
- 3) Any substrate material, that is not more than 100ppm lead by weight.
- 4)“▲” = This data is obtained from composite testing on more than one materials or shapes, it is possible that result obtained from individual testing on any one of the materials or shapes is substantially higher. Please be cautious when using this data for compliance evaluation.

Remark:

Zhejiang RTS Test Co.,Ltd. is the US (CPSC) Accredited Third Party Testing Laboratory, [LAB ID: 1422](#), Shall refer to: <https://www.cpsc.gov/cgi-bin/LabSearch/ViewDetail.aspx?ReqId=7%2bFdY2oZNSUVU5mvbl6jQA%3d%3d&LabId=CJaa18d5DKIPqgie8zcyrw%3d%3d>

----- End of Report -----