



DOLLAR GENERAL Test Report

LAB LOCATION: SHANGHAI
REPORT NUMBER: 64321-080714

ISSUE DATE: September 02, 2021
PAGE: 1 of 16

Applicant : Hiwork Enterprise Limited
RMS 05-15, 13A-F SOUTH TOWER, WORLD FINANCE CTR HARBOUR
CITY, 17 CANTON RD, TST, KL, HONG KONG

Contact Person : FIONA WU

Sample Description : VAL 6CT BRACELETS

Style Number : S22

PO Number : INF07G

SKU Number : 29648201

Department Number : 410

Factory Name : HANGZHOU KAILI ARTS&CRAFT

Country of Origin : CHINA

Date of Submission : August 27, 2021

Test Performance Dates : August 27, 2021 – September 02, 2021

Testing Phase : Certification Test

Test Protocol Number : TY-001-US; SP-002-US; SP-572-US

Label Age Grade : For ages 3 & up

Appropriate Age Grade : [Toys] Over 3 years of age

Tested Age Grade : [Toys] Over 3 years of age

Overall Rating : **PASS**

Photo of Submitted Sample



For and on behalf of
Modern Testing Services Co., Ltd.

Gao Jian, David
Assistant Manager, Toy Division

Modern Testing Services Co., Ltd.

No. 105 Guangzhong Rd., Zhuangqiao Town, Minhang, Shanghai, China P.R.C.201108
Tel: (86) 21-23509600 Fax: (86) 21-23509700 Email: infosh@mts-global.com Website : www.mts-global.com



DOLLAR GENERAL Test Report

LAB LOCATION: SHANGHAI
REPORT NUMBER: 64321-080714

ISSUE DATE: September 02, 2021
PAGE: 2 of 16

TEST RESULT SUMMARY

Test Requested	Results
△Physical and Mechanical Requirements, ASTM F963-17 Standard Consumer Safety Specification for Toy Safety	PASS
△Federal Hazardous Substances Act Regulations, 16 CFR 1500.3 (c)(6)(vi) Flammable Solid	PASS
Soluble Heavy Metals Content – Client’s Limit	NOT APPLICABLE
Screening of Soluble Heavy Metals Content (as Total Content) – Client’s Limit	PASS
△Total Lead Content – U.S. Consumer Product Safety Improvement Act of 2008 (CPSIA), Title I, Section 101	PASS
Total Lead Content – Illinois Lead Poisoning Prevention Act	PASS
Total Lead Content in Toys and Child Care Articles – Client’s Request to Test According to the Reformulation Level(s) Set forth in the Consent Decrees of Similar Products (Court Case No.: Alameda Superior Court RG08378050 / San Francisco Superior Court 07-462991)	PASS
△Total Heavy Metal Screening in Similar Surface Coating Materials and Toys Substrate Materials – ASTM F963-17 Section 4.3.5.1(2) & 4.3.5.2(2)(b) / Section A12.7	PASS
Soluble Heavy Metals Content in Similar Surface Coating Materials and Toys Substrate Materials – ASTM F963-17 Section 4.3.5.1(2) & 4.3.5.2(2)(b)	NOT APPLICABLE
Total Lead Content - Prohibition on the manufacturing and sale of children's products containing lead, cadmium, or phthalates – Client’s Requirement with Reference to Subsection 2, 70.240.20, Revised Code of Washington (RCW), Title 70, Chapter 70.240, Children’s Safe Product Act (CSPA)	PASS
Total Cadmium Content -Client’s Requirement with Reference to Prohibition on the manufacturing and sale of children's products containing lead, cadmium, or phthalates, Subsection 2, 70.240.20, Revised Code of Washington (RCW), Title 70, Chapter 70.240, Children’s Safe Product Act (CSPA)	PASS
Phthalate Content - Prohibition on the manufacturing and sale of children's products containing lead, cadmium, or phthalates–Client’s Requirement with Reference to Subsection 1, 70.240.20, Revised Code of Washington (RCW), Title 70, Chapter 70.240, Children’s Safe Product Act (CSPA)	PASS
Total Lead in Jewelry (Children’s Jewelry) – Client’s Request to Test According to the Reformulation Level(s) Set forth in the Consent Decrees of Similar Products (Court Case No.: Alameda Superior Court RG-04-162075)	PASS
Total Cadmium Content in Jewelry – Client’s Request to Test According to the Reformulation Level(s) Set forth in the Consent Decrees of Similar Products (Court Case No.: Alameda Superior Court RG-10-514803)	PASS
Soluble Cadmium Content in Children’s Jewelry – Client’s Requirement	PASS
△Phthalates Content – 16CFR part 1307, amended U.S. Consumer Product Safety Improvement Act of 2008 (CPSIA), Title I, Section 108	PASS
Phthalates Content – California Assembly Bill Law No. 1108	PASS
Phthalates Content in Toys and Childcare Articles – Client’s Request to Test According to the Reformulation Level(s) Set forth in the Consent Decrees of Similar Products (Court Case No.: Sacramento Superior Court 07AS04683 / Alameda Superior Court BG07350969 / RG08367601 / RG07351032 / RG08378050)	PASS
Labeling and Construction Qualities requirement – Client’s protocol	PASS

Test(s) marked with △ is/are included in the CPC.

Modern Testing Services Co., Ltd.

No. 105 Guangzhong Rd., Zhuanqiao Town, Minhang, Shanghai, China P.R.C.201108
Tel: (86) 21-23509600 Fax: (86) 21-23509700 Email: infosh@mts-global.com Website : www.mts-global.com



DOLLAR GENERAL Test Report

LAB LOCATION: SHANGHAI
REPORT NUMBER: 64321-080714

ISSUE DATE: September 02, 2021
PAGE: 3 of 16

COMPONENT BREAKDOWN LIST:

Test Item	Component Description	Accessibility (Remark 1)	Classification
A1	Blue/pink/transparent plastic(bracelet)	Accessible as received	Accessible substrate
A2	Light pink/green/transparent plastic(bracelet)	Accessible as received	Accessible substrate
A3	Light pink/yellow green/transparent plastic(bracelet)	Accessible as received	Accessible substrate

Remark:

1) The accessibility of the submitted sample after use and abuse is verified according to 16 CFR 1500.87 (e) to (h).

Modern Testing Services Co., Ltd.

No. 105 Guangzhong Rd., Zhuangqiao Town, Minhang, Shanghai, China P.R.C.201108
Tel: (86) 21-23509600 Fax: (86) 21-23509700 Email: infosh@mts-global.com Website : www.mts-global.com



DOLLAR GENERAL Test Report

LAB LOCATION: SHANGHAI
REPORT NUMBER: 64321-080714

ISSUE DATE: September 02, 2021
PAGE: 4 of 16

TEST RESULT:

TOTAL HEAVY METAL CONTENT – TOYS AND CHILDREN’S PRODUCTS

Applicable Tests:
 I. Screening of Soluble Heavy Metals Content (as Total Content) – Client’s Limit
 II. Total Lead Content – U.S. Consumer Product Safety Improvement Act of 2008 (CPSIA), Title I, Section 101
 III. Total Lead Content – Illinois Lead Poisoning Prevention Act
 IV. Total Lead Content in Toys and Child Care Articles – Client’s Requirement according to the Consent Decrees of California Proposition 65

TESTS	I								II		III	IV
	Sb	As	Ba	Cd	Cr	Pb	Hg	Se	Pb		Pb	Pb
Limits (ppm)	60	25	1000	75	60	40	60	500	Coating: 90 Substrate: 100		40	Coating: 90 Substrate: 100 PVC & non-PVC component of baby bibs: 200
									XRF	Wet Chem		
A1	<10	<10	<10	<10	<10	<10	<10	<10	NA	<10	<10	
	P								P		P	P
A2	<10	<10	<10	<10	<10	<10	<10	<10	NA	<10	<10	
	P								P		P	P
A3	<10	<10	<10	<10	<10	<10	<10	<10	NA	<10	<10	
	P								P		P	P

Sb = Antimony, As = Arsenic, Ba = Barium, Cd = Cadmium, Cr = Chromium, Pb = Lead, Hg = Mercury, Se = Selenium

Note: ppm = part per million = mg/kg = milligram per kilogram
 “<” = less than
 P = PASS
 F = FAIL
 NA = Not Applicable
 NT = Not Tested
 RIT = Refer to Individual Test Results
 RSM = Refer to Soluble Heavy Metals Test Results

Modern Testing Services Co., Ltd.

No. 105 Guangzhong Rd., Zhuangqiao Town, Minhang, Shanghai, China P.R.C.201108
 Tel: (86) 21-23509600 Fax: (86) 21-23509700 Email: infosh@mts-global.com Website : www.mts-global.com



DOLLAR GENERAL Test Report

LAB LOCATION: SHANGHAI
REPORT NUMBER: 64321-080714

ISSUE DATE: September 02, 2021
PAGE: 5 of 16

REMARK:

I. Screening of Soluble Heavy Metals Content (as Total Content) – Client’s Limit

Method: Sample was digested with acid mixture and analyzed by Inductively Coupled Argon Plasma Spectrometer / Inductively Coupled Plasma Mass Spectrometer.

II. Total Lead Content – U.S. Consumer Product Safety Improvement Act of 2008 (CPSIA), Title I, Section 101

Method:

- 1) Lead in paint and other similar surface coatings:
The test is conducted according to the US CPSC Standard Operating Procedure for Determining Lead (Pb) in Paint and Other Similar Surface Coatings, February 25, 2011 (CPSC-CH-E1003-09.1)
- 2) Lead in metals:
The test is conducted according to the US CPSC Standard Operating Procedure for Determining Total Lead (Pb) in Children’s Metal Products (Including Children’s Metal Jewelry), November 15, 2012 (CPSC-CH-E1001-08.3)
- 3) Lead in other non-metal materials including plastics, glass and leather material:
The test is conducted according to the US CPSC Standard Operating Procedure for Determining Total Lead (Pb) in Non-Metal Children’s Products, November 15, 2012 (CPSC-CH-E1002-08.3)

Remark:

1. The accessibility of the submitted sample is verified according to 16 CFR 1500.87 (e) before and after abuse.

III. Total Lead Content – Illinois Lead Poisoning Prevention Act

Method:

- 1) Lead in paint and other similar surface coatings:
The test is conducted according to the US CPSC Standard Operating Procedure for Determining Lead (Pb) in Paint and Other Similar Surface Coatings, February 25, 2011 (CPSC-CH-E1003-09.1)
- 2) Lead in metals:
The test is conducted according to the US CPSC Standard Operating Procedure for Determining Total Lead (Pb) in Children’s Metal Products (Including Children’s Metal Jewelry), November 15, 2012 (CPSC-CH-E1001-08.3)
- 3) Lead in other non-metal materials including plastics, glass and leather material:
The test is conducted according to the US CPSC Standard Operating Procedure for Determining Total Lead (Pb) in Non-Metal Children’s Products, November 15, 2012 (CPSC-CH-E1002-08.3)

IV. Total Lead Content in Toys and Child Care Articles – Client’s Requirement according to the Consent Decrees of California Proposition 65

Method: Sample was digested with reference to EPA 3051. The lead content was analyzed by Atomic Absorption Spectrophotometer / Inductively Coupled Argon Plasma Spectrometer / Inductively Coupled Plasma Mass Spectrometer.

Remark: The maximum permissible limit(s) was / were quoted from the client’s protocol constructed according to various Consent Decrees. Compliance with the above stated limit(s) does not show compliance with Proposition 65 or a guarantee against possible legal action but provides a relative level of assurance against potential lawsuits.

Modern Testing Services Co., Ltd.

No. 105 Guangzhong Rd., Zhuangqiao Town, Minhang, Shanghai, China P.R.C.201108
Tel: (86) 21-23509600 Fax: (86) 21-23509700 Email: infosh@mts-global.com Website : www.mts-global.com



DOLLAR GENERAL Test Report

LAB LOCATION: SHANGHAI
REPORT NUMBER: 64321-080714

ISSUE DATE: September 02, 2021
PAGE: 6 of 16

**Total Heavy Metal Screening in Similar Surface Coating Materials and Toys Substrate Materials –
ASTM F963-17 Section 4.3.5.1(2) & 4.3.5.2(2)(b) / Section A12.7**

Test Item	Mass of Trace Amount (mg)	Result – Total Heavy Metals (mg/kg)								Conclusion
		Sb	As	Ba	Cd	Cr	Pb	Hg	Se	
A1	95.8	<10	<10	<10	<10	<10	<10	<10	<10	PASS
A2	NA	<10	<10	<10	<10	<10	<10	<10	<10	PASS
A3	95.5	<10	<10	<10	<10	<10	<10	<10	<10	PASS
Limit for Surface Coatings and Substrates Other Than Modeling Clay		60	25	1000	75	60	90	60	500	-
Limit for Modeling Clays		60	25	250	50	25	90	25	500	-

Sb = Antimony, As = Arsenic, Ba = Barium, Cd = Cadmium, Cr = Chromium, Pb = Lead, Hg = Mercury, Se = Selenium

Method: ASTM F963-17 Section 8.3.1, sample was digested with acid mixture and analyzed by Inductively Coupled Argon Plasma Spectrometer / Inductively Coupled Plasma Mass Spectrometer / ASTM F963-17 Section A12.7, sample was analyzed by X-ray Fluorescence Spectrometry.

Remark: The received sample(s) contained component(s) of less than 10mg on one single sample, therefore such component(s) was not tested for soluble heavy metals content as specified in clause 8.3.3.6 (2) / 8.3.5.3 (2) of this standard.

Modern Testing Services Co., Ltd.

No. 105 Guangzhong Rd., Zhuangqiao Town, Minhang, Shanghai, China P.R.C.201108
Tel: (86) 21-23509600 Fax: (86) 21-23509700 Email: infosh@mts-global.com Website : www.mts-global.com



DOLLAR GENERAL Test Report

LAB LOCATION: SHANGHAI
REPORT NUMBER: 64321-080714

ISSUE DATE: September 02, 2021
PAGE: 7 of 16

Total Lead Content - Prohibition on the manufacturing and sale of children's products containing lead, cadmium, or phthalates – Client's Requirement with Reference to Subsection 2, 70.240.20, Revised Code of Washington (RCW), Title 70, Chapter 70.240, Children's Safe Product Act (CSPA)

Test Item	Total Lead (Pb) (mg/kg)		Conclusion
	Result	Maximum Permissible Limit	
A1	<10	90	PASS
A2	<10	90	PASS
A3	<10	90	PASS

Method: Sample was digested with acid mixture and analyzed by Inductively Coupled Argon Plasma Spectrometer / Inductively Coupled Plasma Mass Spectrometer.

Note: mg/kg = milligram per kilogram
"<" = less than

Total Cadmium Content -Client's Requirement with Reference to Prohibition on the manufacturing and sale of children's products containing lead, cadmium, or phthalates, Subsection 2, 70.240.20, Revised Code of Washington (RCW), Title 70, Chapter 70.240, Children's Safe Product Act (CSPA)

Test Item	Total Cadmium (Cd) (mg/kg)		Conclusion
	Result	Maximum Permissible Limit	
A1	<10	40	PASS
A2	<10	40	PASS
A3	<10	40	PASS

ND = Not detected (Laboratory Reporting Limit = 10mg/kg)

Method: Sample was digested with acid mixture and analyzed by Inductively Coupled Argon Plasma Spectrometer / Inductively Coupled Plasma Mass Spectrometer.

Note: mg/kg = milligram per kilogram
"<" = less than

Modern Testing Services Co., Ltd.

No. 105 Guangzhong Rd., Zhuangqiao Town, Minhang, Shanghai, China P.R.C.201108
Tel: (86) 21-23509600 Fax: (86) 21-23509700 Email: infosh@mts-global.com Website : www.mts-global.com



DOLLAR GENERAL Test Report

LAB LOCATION: SHANGHAI
REPORT NUMBER: 64321-080714

ISSUE DATE: September 02, 2021
PAGE: 8 of 16

Total Lead in Jewelry (Children's Jewelry) – Client's Request to Test According to the Reformulation Level(s) Set forth in the Consent Decrees of Similar Products (Court Case No.: Alameda Superior Court RG-04-162075)

Test Item	Result - Total Lead (Pb) (ppm)	Conclusion
A1	<10	PASS (See Remark)
A2	<10	PASS (See Remark)
A3	<10	PASS (See Remark)

Method: With reference to US EPA 3052. The lead content was analyzed by Inductively Coupled Argon Plasma Spectrometer / Inductively Coupled Mass Spectrometer.

Remark: Proposition 65 requires businesses to warn Californians about exposures to certain listed chemicals known to cause cancer, birth defects, or other reproductive harm. If a business exposes a Californian to a listed chemical without providing a warning, then the business may be sued for the possible violation of Proposition 65. The business will then have the burden of proving that the listed chemical in the product is under the safe harbor limit or that the anticipated exposure level will not pose a significant risk of cancer or reproductive harm.

The reformulation levels set forth in the Consent Decrees of similar products to the Sample are **90 ppm (Paint and surface coating) and 100 ppm (All other materials)**. The reformulation levels set forth in the various Consent Decrees are only the binding requirements for the defendants named in the case, and by complying with the reformulation requirements, the defendants are protected from further Proposition 65 violations for the products that are covered in the case. However, the reformulation levels set forth in the various Consent Decrees are not necessarily the safe harbor limits. The reformulation levels set in the Consent Decrees are usually expressed in relative concentration levels (i.e., mg/kg, ppm) while the safe harbor limits identify a level of exposure to a listed chemical in micrograms per day. Therefore, for businesses that are not named in the Consent Decrees as defendants, complying with the reformulation levels of Consent Decrees does not fully protect the businesses from being sued for the possible violation of Proposition 65. These businesses may still be sued for the possible violation of Proposition 65 and will have the burden of proving that the listed chemical in their products are under the safe harbor level or that the anticipated exposure level will not pose a significant risk of cancer or reproductive harm.

If your product contains any amount of a listed chemical, the only way to fully avoid the possibility of the burden of proving that the listed chemical in your product is under the safe harbor limit or that the anticipated exposure level will not pose a significant risk of cancer or reproductive harm is to provide a warning about the exposures to the listed chemical known to cause cancer, birth defects, or other reproductive harm. Please consult MTS for more details regarding the different options of labeling and the mechanics of labeling.

Note: ppm = part per million
" < " = less than
" > " = more than

Modern Testing Services Co., Ltd.

No. 105 Guangzhong Rd., Zhuangqiao Town, Minhang, Shanghai, China P.R.C.201108
Tel: (86) 21-23509600 Fax: (86) 21-23509700 Email: infosh@mts-global.com Website : www.mts-global.com



DOLLAR GENERAL Test Report

LAB LOCATION: SHANGHAI
REPORT NUMBER: 64321-080714

ISSUE DATE: September 02, 2021
PAGE: 9 of 16

Total Cadmium Content in Jewelry – Client’s Request to Test According to the Reformulation Level(s) Set forth in the Consent Decrees of Similar Products (Court Case No.: Alameda Superior Court RG-10-514803)

Test Item	Result - Total Cadmium (Cd) (ppm)	Conclusion
A1	<10	PASS (See Remark)
A2	<10	PASS (See Remark)
A3	<10	PASS (See Remark)

Method: With reference to US EPA 3052. The cadmium content was analyzed by Inductively Coupled Argon Plasma Spectrometer / Inductively Coupled Mass Spectrometer.

Remark: Proposition 65 requires businesses to warn Californians about exposures to certain listed chemicals known to cause cancer, birth defects, or other reproductive harm. If a business exposes a Californian to a listed chemical without providing a warning, then the business may be sued for the possible violation of Proposition 65. The business will then have the burden of proving that the listed chemical in the product is under the safe harbor limit or that the anticipated exposure level will not pose a significant risk of cancer or reproductive harm.

The reformulation level set forth in the Consent Decrees of similar products to the Sample is **300 ppm**. The reformulation levels set forth in the various Consent Decrees are only the binding requirements for the defendants named in the case, and by complying with the reformulation requirements, the defendants are protected from further Proposition 65 violations for the products that are covered in the case. However, the reformulation levels set forth in the various Consent Decrees are not necessarily the safe harbor limits. The reformulation levels set in the Consent Decrees are usually expressed in relative concentration levels (i.e., mg/kg, ppm) while the safe harbor limits identify a level of exposure to a listed chemical in micrograms per day. Therefore, for businesses that are not named in the Consent Decrees as defendants, complying with the reformulation levels of Consent Decrees does not fully protect the businesses from being sued for the possible violation of Proposition 65. These businesses may still be sued for the possible violation of Proposition 65 and will have the burden of proving that the listed chemical in their products are under the safe harbor level or that the anticipated exposure level will not pose a significant risk of cancer or reproductive harm.

If your product contains any amount of a listed chemical, the only way to fully avoid the possibility of the burden of proving that the listed chemical in your product is under the safe harbor limit or that the anticipated exposure level will not pose a significant risk of cancer or reproductive harm is to provide a warning about the exposures to the listed chemical known to cause cancer, birth defects, or other reproductive harm. Please consult MTS for more details regarding the different options of labeling and the mechanics of labeling.

Note: ppm = part per million
“<” = less than
“>” = more than

Modern Testing Services Co., Ltd.

No. 105 Guangzhong Rd., Zhuangqiao Town, Minhang, Shanghai, China P.R.C.201108
Tel: (86) 21-23509600 Fax: (86) 21-23509700 Email: infosh@mts-global.com Website : www.mts-global.com



DOLLAR GENERAL Test Report

LAB LOCATION: SHANGHAI
REPORT NUMBER: 64321-080714

ISSUE DATE: September 02, 2021
PAGE: 10 of 16

Soluble Cadmium Content in Children's Jewelry – Client's Requirement

Test Item	Soluble Cadmium (Cd) (mg/kg)		Conclusion
	Result	Client's Requirement	
A1	<10	75	PASS
A2	<10	75	PASS
A3	<10	75	PASS

Method: With reference to ASTM F963-17 Section 8.3. The heavy metals content was determined by Inductively Coupled Argon Plasma Spectrometer / Inductively Coupled Plasma Mass Spectrometer.

Remark: All the reported results are adjusted analytical results with the analytical correction of 30%.

Note: mg/kg = milligram per kilogram
“<” = less than



DOLLAR GENERAL Test Report

LAB LOCATION: SHANGHAI
REPORT NUMBER: 64321-080714

ISSUE DATE: September 02, 2021
PAGE: 11 of 16

Labeling and Construction Qualities requirement – Client’s protocol

TY-001-US

Evaluation	Citation/Method	Criteria	Result
Determination of Children’s Product and Age Grading	ASTM F963, Section 5.2 Annex A1 / CPSC Age Grade Determination guideline / 16 CFR 1200	<p>Product category should be determined according to national guidelines and industrial standards. The major categories are (1) Toys, (2) Children’s Product, (3) Child-care articles, and (4) General Use Products</p> <p>All products shall be tested according to either the appropriate age grade, as determined by MTS or the labeled age grade if it is more stringent. In the event the sample is not age labeled, MTS will determine the appropriate age grade and test accordingly.</p> <p>Label Age Grade: For ages 3 & up Appropriate Age Grade: Over 3 years of age Tested Age Grade: Over 3 years of age</p> <p>[For products except apparel and footwear] - Age grade labeling is required on the packaging of all toys and children’s products, unless (1) the appropriate age grade for the product is all ages (0+), <u>or</u> (2) the product has been tested to and meets the requirements applicable to toys/children’s products for all ages. - The packaging and product shall not contain any statement contradicts the appropriate age grade. For example, "This is not a toy.", "Do not give it to children.", "For Adult Use Only."</p> <p>Remark: - Presence of Age Warning fulfills the age grade labeling requirement. For example, "Not for children under 3 yrs." - During Pre-Production Review, report(s) could be submitted to show the item meets all ages requirements - During Certification/ Verification Test, perform all ages (0+) tests on an extra sample to check whether it meets all ages requirements.</p>	P
UPLR (Products WITHOUT consumable components)	NIST Uniform Laws and Regulations Handbook 130	<p>Shall be labeled with the following information: 1. Product identification 2. Manufacturer, Packer, or Distributor’s Name & Address (City, State & ZIP Code) 3. Net quantity of contents shall be expressed in terms of weight or mass, measure, numerical count, or combination so as to give accurate information to facilitate consumer comparison</p> <p>Client requirement: Remark the missing information instead of fail</p>	P

Modern Testing Services Co., Ltd.

No. 105 Guangzhong Rd., Zhuangqiao Town, Minhang, Shanghai, China P.R.C.201108
Tel: (86) 21-23509600 Fax: (86) 21-23509700 Email: infosh@mts-global.com Website : www.mts-global.com



DOLLAR GENERAL Test Report

LAB LOCATION: SHANGHAI
REPORT NUMBER: 64321-080714

ISSUE DATE: September 02, 2021
PAGE: 12 of 16

Evaluation	Citation/Method	Criteria	Result
Country of origin marking	19 CFR 134	Every article of foreign origin (or its container) imported into the United States shall be marked in a conspicuous place as legibly, indelibly, and permanently as the nature of the article (or container) will permit, in such manner as to indicate to an ultimate purchaser in the United States the English name of the country of origin of the article.	P Made in China
Warning Label of California Proposition 65	Visual Check/ Client's Requirements	Warning label of California Proposition 65 must not be presence.	P
Tracking label for children's products	Consumer Product Safety Improvement Act, Section 103. Tracking Labels for Children's Products	<p>Any children's product shall place permanent, distinguishing marks on the product and it's packaging, to the extent practicable, that will enable –</p> <p>(A) the manufacturer to ascertain the location and date of production of the product, cohort information (including the batch, run number, or other identifying characteristics), and any other information determined by the manufacturer to facilitate ascertaining the specific source of the product by reference to those marks</p> <p>(B) the ultimate purchaser to ascertain the manufacturer or private labeler, location and date of production of the product, and cohort information (including the batch, run number, or other identifying characteristics).</p> <p>Dollar General Tracking label requirement: Report tracking code on product and packaging.</p> <p>Dollar General Tracking Code Format: DOLGEN + SKU + Month Code + Year Code</p> <p>Month Code and Year Code follow Shipdate. Month Code is A = January, B = February, C = March, and so on. Year Code is 15 = Year 2015, 16 = Year 2016, 17 = Year 2017, and so on.</p> <p>The code could be in 1 line or 2 lines where the DOLGEN must be on one line and the rest of the tracking label is on the second line. i.e. DOLGEN12345678A17 or DOLGEN 12345678A17</p> <p>If Dollar General Distribution Clause (Dollar General's company name & full address) is presented on the packaging, accept only present SKU + Month Code + Year Code.</p> <p>Full code DOLGEN + SKU + Month Code + Year Code must always be presented on the product, if applicable.</p>	P On Product: Not Provided On Packaging: 29648201J21

Modern Testing Services Co., Ltd.

No. 105 Guangzhong Rd., Zhuangqiao Town, Minhang, Shanghai, China P.R.C.201108
Tel: (86) 21-23509600 Fax: (86) 21-23509700 Email: infosh@mts-global.com Website : www.mts-global.com



DOLLAR GENERAL Test Report

LAB LOCATION: SHANGHAI
REPORT NUMBER: 64321-080714

ISSUE DATE: September 02, 2021
PAGE: 13 of 16

Evaluation	Citation/Method	Criteria	Result
Labeling for toys	ASTM F963-17 Standard Consumer Safety Specification for Toy Safety, Section 5 to 7	Shall meet the labeling requirements specified in the standard.	P
Sharp points	16 CFR 1500.48 / 16 CFR 1500.50-53	Products intended for children under 8 years of age shall have no accessible, potentially hazardous sharp points before or after abuse tests. - 4 Mechanical test required	P
Sharp edges	16 CFR 1500.49 / 16 CFR 1500.50-53	Products intended for children under 8 years of age shall have no accessible, potentially hazardous sharp edges before or after abuse tests. - 4 Mechanical test required	P
Mechanical hazards	ASTM F963-17 Standard Consumer Safety Specification for Toy Safety	Toys shall meet the requirements specified in the standard - 4 Mechanical test required	P
Flammability of solid	ASTM F963-17, Section 4.2 and Annex A5/ 16 CFR 1500.44 / 16 CFR 1500.3(c)(6)(vi)	Shall not exceed the maximum allowable limit of no greater than 0.1 inches per second.	P
Defects	MTS in house method	Shall have no discernible surface degradation, including crazing, shivering, denting, bubbles, cracks, stains, deformations, chips, fractures, heavy lines, waves, shear marks, scratches, scuff marks, indentations, or blisters.	P
Workmanship	MTS in house method	Shall have no components missing, malformed, and/or fractured. Shall present proper, even and uniform adhesion. Components shall be even in color.	P
Claim verification	MTS in house method	Shall meet the labeled claim. Subjective claim, non-measurable claim and measurable claim which the external factor will affect the performance of the item will not be verified. Some of claim verification will consist of external charge.	P (Refer to result table)
Functionality	MTS in house method	Shall function as intended. The evaluation does not include the functions that are covered by other tests.	P

Note: P = Pass F = Fail NA = Not applicable NR = Not Requested

Modern Testing Services Co., Ltd.

No. 105 Guangzhong Rd., Zhuanqiao Town, Minhang, Shanghai, China P.R.C.201108
Tel: (86) 21-23509600 Fax: (86) 21-23509700 Email: infosh@mts-global.com Website : www.mts-global.com



DOLLAR GENERAL Test Report

LAB LOCATION: SHANGHAI
REPORT NUMBER: 64321-080714


ISSUE DATE: September 02, 2021
PAGE: 14 of 16

Claim Verification

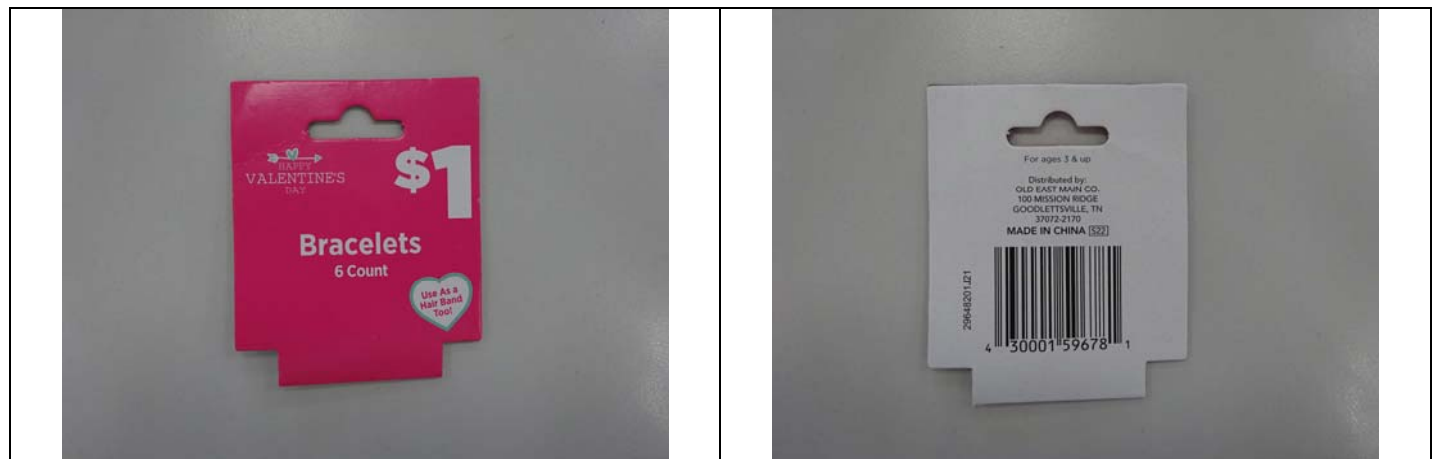
Claim	Recorded/Finding	Result
6 count	As claimed	P

Note: P = Pass F = Fail NA = Not applicable NR = Not Requested NT = Not Tested

Location of Tracking Label

Tracking label on packaging	Tracking label on product
	<p>Not provided</p>

Packaging Details



****End of Test Report****

Modern Testing Services Co., Ltd.

No. 105 Guangzhong Rd., Zhuanqiao Town, Minhang, Shanghai, China P.R.C.201108
Tel: (86) 21-23509600 Fax: (86) 21-23509700 Email: infosh@mts-global.com Website : www.mts-global.com



DOLLAR GENERAL Test Report

LAB LOCATION: SHANGHAI
REPORT NUMBER: 64321-080714

ISSUE DATE: September 02, 2021
PAGE: 15 of 16

NOTE:

If there is question or concern regarding the above results, please contact us via email aqian@mts-global.com

This test report is governed by the Terms and Conditions, available on request or accessible at <http://www.mts-global.com/en/terms.html>. Attention is especially drawn to the limitations of liability, indemnification and jurisdictional provisions defined therein. This report is issued strictly based on the testing of the samples submitted by you. The test results in this report refer only to the sample(s) actually tested and do not refer or be deemed to refer to any bulk production from which such sample(s) may be said to have been obtained. In the event that MTS was requested to survey and test any bulk production quantity of samples, MTS, in the absence of any contrary written instructions, performed random sampling of bulk production for testing purposes. Variations in the conditions under which samples are stored, transported, etc., may lead to variations in the test results. MTS cannot anticipate and shall not be held responsible for variations in test results that may be due to factors beyond MTS' control, such as, sample cross-contamination, evaporation of volatile substances due to storage temperature, humidity, etc. This report does not constitute a recommendation, actual or implied, for any specific course of action. Other than the expressed warranties made in the Terms and Conditions of the MTS Test Request Form, MTS makes no warranties or representations either express or implied with respect to this report. In no circumstances whatsoever shall MTS be liable for any consequential, special or incidental damages arising out of, or in connection with, this report. As per regulation of China Metrology Accreditation (CMA), a report without CMA accreditation logo will not serve as testimonial to the public for the purpose defined by CMA regulations.

Modern Testing Services Co., Ltd.

No. 105 Guangzhong Rd., Zhuangqiao Town, Minhang, Shanghai, China P.R.C.201108
Tel: (86) 21-23509600 Fax: (86) 21-23509700 Email: infosh@mts-global.com Website : www.mts-global.com



DOLLAR GENERAL Test Report

LAB LOCATION:
REPORT NUMBER:

SHANGHAI
64321-080714

ISSUE DATE:
PAGE:

September 02, 2021
16 of 16

DOLLAR GENERAL®

Certificate of Compliance

Reduction of Toxics in Packaging

We certify that all packaging and packaging components that have been or will be sold to Dollar General or its subsidiaries comply with the requirements of the toxics in packaging law(s). Specifically:

- 1) We certify that the regulated metals – lead, mercury, cadmium, and hexavalent chromium -- were **not intentionally or believed to be added** to any package or packaging component during the manufacturing process.
- 2) We further certify that the **sum of the incidental concentration levels** of lead, mercury, cadmium and hexavalent chromium present in any package or package component does not exceed 100 parts per million by weight.
- 3) We further certify that no materials used to replace the heavy metals are present in a quantity or manner that creates a hazard as great or greater than the hazard created by the regulated metals.
- 4) We will maintain adequate documentation of this certification for inspection upon request.

COMPANY NAME: Hiwork Enterprise Limited

ADDRESS: RMS 05-15, 13A-F SOUTH TOWER, WORLD FINANCE CTR HARBOUR CITY, 17 CANTON RD, TST, KL, HONG KONG

CERTIFIED BY:

Fiona Wu (Name) *Fiona Wu* (Signature)
Sales Manager (Title) 2021/02/01 (Date)

Modern Testing Services Co., Ltd.

No. 105 Guangzhong Rd., Zhuangqiao Town, Minhang, Shanghai, China P.R.C.201108
Tel: (86) 21-23509600 Fax: (86) 21-23509700 Email: infosh@mts-global.com Website : www.mts-global.com