



# TEST REPORT

## Test information

<b>Applicant</b>	:	Ningbo Home-Dollar Imp.& Exp.Corp.
<b>Address</b>	:	69 Guangyuan Road, Jiangbei District, Ningbo,China.
<b>Sample Name</b>	:	TEASING BRUSH.
<b>Style#</b>	:	G14862.
<b>Country of origin</b>	:	China.
<b>Export to</b>	:	USA.
<b>Buyer</b>	:	REGENT PRODUCTS CORP.
<b>Receiving Date</b>	:	November 01, 2022.
<b>Test period</b>	:	November 01, 2022.~November 03, 2022.
<b>Test Requested</b>	:	Tests requested in accordance to client requirement.

<u>TEST ITEMS</u>	<u>CONCLUSION</u>
Total Lead(Pb) Content - California Proposition 65- Superior Court of California- County of Santa Clara Case No. 112CV231165.	PASS
Total Cadmium(Cd) Content - California Proposition 65- Superior Court of California- County of Alameda Case No. RG 10-514803.	PASS
Phthalates Content test- Client's requirement	PASS

Signed for and on behalf of  
RTS TEST CO., LTD. (Zhejiang)



BINBIN ZOU

Approved signatory

### Zhejiang RTS Test Co., LTD.

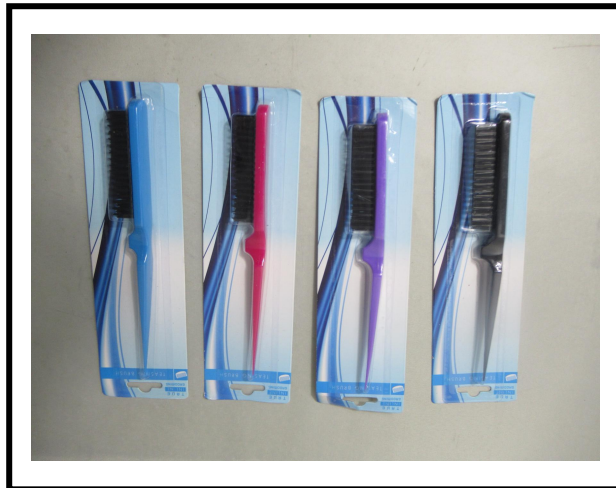
Phone: +86(0)579-85640080  
Email: [ruiyi-@zi-rt.com](mailto:ruiyi-@zi-rt.com)  
<http://www.irtslab.com>  
浙江省义乌市稠江街道英才创业园B区7幢2-4层,  
2-4/f, Building 7, Block B, Ying cai Business Park,  
Choujiang Street, Yiwu, Zhejiang.

This Test Report is issued by the Company subject to its General Conditions of Service printed overleaf or available on request. Attention is drawn to the limitation of liability ,indemnification and jurisdictional policies defined therein .The results shown in this Test report refer only to the sample(s) tested unless otherwise stated This test report shall not be reproduced ,except in full, without written approval of the Company. If in doubt, please write an email.Reports without the CMA mark are not used as proof of domestic social justice data

**Sample image:**



**Finished product image:**



**Test result:****A. Total Lead(Pb) content:** (Unit: mg/kg)

California Proposition 65- Superior Court of California- County of Santa Clara Case No. 112CV231165.

**Test method:** As per Metal - CPSC-CH-E1001.08.3; Nonmetal - CPSC-CH-E1002.08.3; Surface coating - CPSC-CH-E1003.09.1, Was analyzed by flame atomic absorption spectrometry (AAS) or Inductively Coupled Plasma Optical Emission Spectrometer (ICP-OES).

Test Number	Item/ component description(s)
A1	Black plastic handle & black plastic brush

Test item	Test Number	MDL	Test Result	Maximum permissible limit	Conclusion
Lead (Pb)	A1▲	5	N.D.	100	PASS

**Note:**

- 1) MDL=Method Detection Limit.
- 2) N.D. = not detected, less than MDL.
- 3) Products shall not exceed 100 ppm (0.01 %) total lead content.
- 4) Products shall produce a result of 1.0 micrograms or less lead in Ghost Wipe™ test
- 5) “▲” = This data is obtained from composite testing on more than one materials or shapes, it is possible that result obtained from individual testing on any one of the materials or shapes is substantially higher. Please be cautious when using this data for compliance evaluation.

**Remark:**Zhejiang RTS Test Co.,Ltd. is the US (CPSC) Accredited Third Party Testing Laboratory, [LAB ID: 1422](#), Shall refer to:
<https://www.cpsc.gov/cgi-bin/LabSearch/ViewDetail.aspx?ReqId=7%2bFdY2oZNSUVU5mvl6jQA%3d%3d&LabId=CJaaI8d5DKIPqgie8zcyw%3d%3d>
**Zhejiang RTS Test Co., LTD**

Phone: +86(0)579-85640080

Email: [ruiyi-8@zi-rt.com](mailto:ruiyi-8@zi-rt.com)<http://www.irtslab.com>

浙江省义乌市稠江街道英才创业园B区7幢2-4层.  
2-4/f, Building 7, Block B, Ying cai Business Park,  
Choujiang Street, Yiwu, Zhejiang.

This Test Report is issued by the Company subject to its General Conditions of Service printed overleaf or available on request. Attention is drawn to the limitation of liability, indemnification and jurisdictional policies defined therein. The results shown in this Test report refer only to the sample(s) tested unless otherwise stated. This test report shall not be reproduced, except in full, without written approval of the Company. If in doubt, please write an email.

**B. Total Cadmium(Cd) content:** (Unit: mg/kg)

California Proposition 65- Superior Court of California- County of Alameda Case No. RG 10-514803

**Test method:** RTS-ZY-008 As per Metal - CPSC-CH-E1001-08.3; Nonmetal - CPSC-CH-E1002-08.3; Surface coating - CPSC-CH-E1003-09.1, Was analyzed by flame atomic absorption spectrometry(AAS) or Inductively Coupled Plasma Optical Emission Spectrometer (ICP-OES).

Test Number	Item/ component description(S)
A1	Black plastic handle & black plastic brush

Test item	Test Number	MDL	Test Result	Maximum permissible limit	Conclusion
Cadmium (Cd)	A1 ▲	5	N.D.	300	PASS

**Note:**

- 1) MDL=Method Detection Limit.
- 2) N.D. = not detected, less than MDL.
- 3) Product shall not exceed 300 ppm (0.030%) total cadmium content.
- 4)“▲” = This data is obtained from composite testing on more than one materials or shapes, it is possible that result obtained from individual testing on any one of the materials or shapes is substantially higher. Please be cautious when using this data for compliance evaluation.

**C.Phthalates Content Test:** (Unit: mg/kg)**Test method:** With reference to CPSC-CH-C1001-09.4, was analyzed by Gas Chromatograph-Mass Spectrometer (GC-MS).

Test Number	Item/ component description(s)
A1	Black plastic handle & black plastic brush

Test Item(s)	CAS No.	Results A1▲	MDL	Client's Limit
Dibutyl Phthalate(DBP)	84-74-2	N.D.	50	1000
Benzylbutyl Phthalate(BBP)	85-68-7	N.D.	50	1000
Bis-(2-ethylhexyl)Phthalate(DEHP)	117-81-7	N.D.	50	1000
Di-iso-nonyl Phthalate(DINP)	28553-12-0	N.D.	50	1000
Di-iso-decylphthalate(DIDP)	26761-40-0	N.D.	50	1000
Di-n-hexyl phthalate(DNHP)	84-75-3	N.D.	50	1000
<b>Conclusion</b>	-	PASS	-	-

**Note:**

1) N.D. = not detected, less than MDL.

2) MDL = Method Detection Limit.

3)“▲” = This data is obtained from composite testing on more than one materials or shapes, it is possible that result obtained from individual testing on any one of the materials or shapes is substantially higher. Please be cautious when using this data for compliance evaluation.

----- End of Report -----

**Zhejiang RTS Test Co., LTD**

Phone: +86(0)579-85640080

Email: [ruiyi-@zi-rt.com](mailto:ruiyi-@zi-rt.com)<http://www.irtslab.com>浙江省义乌市稠江街道英才创业园B区7幢2-4层.  
2-4/f, Building 7, Block B, Ying cai Business Park,  
Choujiang Street, Yiwu, Zhejiang.

---

This Test Report is issued by the Company subject to its General Conditions of Service printed overleaf or available on request. Attention is drawn to the limitation of liability ,indemnification and jurisdictional policies defined therein .The results shown in this Test report refer only to the sample(s) tested unless otherwise stated This test report shall not be reproduced ,except in full, without written approval of the Company. If in doubt, please write an email.

---