



TEST REPORT

Test information

Applicant	:	NINGBO SHIMAOTONG INTERNATIONAL CO.,LTD.
Address	:	Room 1203, Building 004, 495 Jiangdong North Road, Yinzhou District, Ningbo City, Zhejiang Province.
Sample Description	:	Manicure set 4-piece
PO#	:	Not provided.
Style #	:	Not provided.
Supplier	:	Not provided.
Country of origin	:	China.
Export to	:	Not provided.
Buyer	:	Not provided.
Receiving Date	:	August 26, 2022.
Test period	:	August 26, 2022.~September 02, 2022.
Amended date	:	August 29, 2022.
Test Requested	:	Tests requested in accordance to client requirement.

<u>TEST ITEMS</u>	<u>CONCLUSION</u>
Total Lead(Pb) Content - California Proposition 65- Superior Court of California- County of Alameda Case No. RG 10-545680/ RG-10-545687.	PASS
Total Cadmium(Cd) Content - California Proposition 65- Superior Court of California- County of Alameda Case No. RG 10-514803.	PASS
Phthalates Content -California proposition 65 – Superior Court of California – County of Alameda Case No.BG07350969 / RG08367601 / RG07351032 / RG08378050 and CPSIA	PASS

Signed for and on behalf of

RTS TEST CO., LTD. (Zhejiang)

BINBIN ZOU

Approved Signatory

Zhejiang RTS Test Co., LTD.

Phone: +86(0)579-85640080.

Email: ruiyi-9@zj-rt.com

[Http://www.rtslab.com](http://www.rtslab.com)浙江省义乌市稠江街道英才创业园B区7幢2-4层,
2-4f, Building 7, Block B, Ying cai Business Park,
Choujiang Street, Yiwu, Zhejiang.

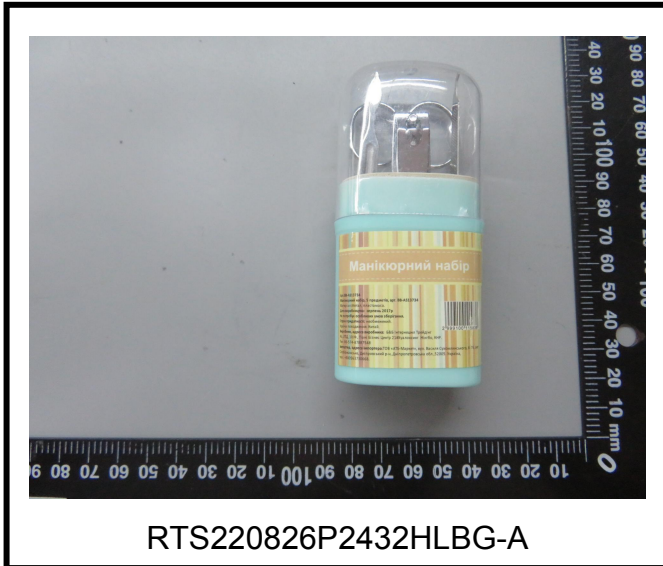
Scan to follow us



Scan for authenticity

This Test Report is issued by the Company subject to its General Conditions of Service printed overleaf or available on request. Attention is drawn to the limitation of liability ,indemnification and jurisdictional policies defined therein .The results shown in this Test report refer only to the sample(s) tested unless otherwise stated This test report shall not be reproduced ,except in full, without written approval of the Company. If in doubt, please write an email. Reports without the CMA mark are not used as proof of domestic social justice data

Sample image:



**Test result:****A. Total Lead(Pb) content:** (Unit: mg/kg)

California Proposition 65- Superior Court of California- County of Alameda Case No.RG 10-545680/ RG-10-545687.

Test method: As per Metal - CPSC-CH-E1001.08.3; Nonmetal - CPSC-CH-E1002.08.3; Surface coating -

CPSC-CH-E1003.09.1, Was analyzed by flame atomic absorption spectrometry (AAS) or Inductively Coupled Plasma Optical Emission Spectrometer (ICP-OES).

Test Number	Item/ component description(s)
A1	(green & transparent) plastic shell
A2	Gray white EVA
A3	Silvery plating metal (nail scissors) (upper & lower & screw)
A4	Silvery plating metal (scissors) (handle & blade & screw)
A5	Silvery plating metal (file)
A6	Silvery plating metal (nail knife)
A7	(pink & green & blue) plastic brush handle
A8	(pink & green & blue) pumice stone
A9	(pink & green & blue) foam toe separators

Test item	Test Number	MDL	Test Result	Maximum permissible limit	Conclusion
Lead (Pb)	A1▲	5	N.D.	200	PASS
	A2	5	21	200	PASS
	A3▲	5	N.D.	200	PASS
	A4▲	5	40	200	PASS
	A5	5	N.D.	200	PASS
	A6	5	N.D.	200	PASS
	A7▲	5	N.D.	200	PASS
	A8▲	5	36	200	PASS
	A9▲	5	N.D.	200	PASS

Note:

- 1) MDL=Method Detection Limit.
- 2) N.D. = not detected, less than MDL.
- 3) Paints and surface coatings shall not exceed 90 ppm (0.009%) total lead content.
- 4) Substrates shall not exceed 200 ppm (0.020%) total lead content.
- 5)“▲” = This data is obtained from composite testing on more than one materials or shapes, it is possible that result obtained from individual testing on any one of the materials or shapes is substantially higher. Please be cautious when using this data for compliance evaluation.

Zhejiang RTS Test Co., LTD.

Phone: +86(0)579-85640080.

Email: ruiyi-@zj-rt.com

[Http://www.rtslab.com](http://www.rtslab.com)浙江省义乌市稠江街道英才创业园B区7幢2-4层,
2-4f, Building 7, Block B, Ying cai Business Park,
Choujiang Street, Yiwu, Zhejiang.

This Test Report is issued by the Company subject to its General Conditions of Service printed overleaf or available on request. Attention is drawn to the limitation of liability ,indemnification and jurisdictional policies defined therein .The results shown in this Test report refer only to the sample(s) tested unless otherwise stated This test report shall not be reproduced ,except in full, without written approval of the Company. If in doubt, please write an email.

**Remark:**

Zhejiang RTS Test Co.,Ltd. is the US (CPSC) Accredited Third Party Testing Laboratory, [LAB ID: 1422](#), Shall refer to:

<https://www.cpsc.gov/cgi-bin/LabSearch/ViewDetail.aspx?ReqId=7%2bFdY2oZNSUVU5mvl6jQA%3d%3d&LabId=CJaa18d5DKIPqgie8zcyrw%3d%3d>

B. Total Cadmium(Cd) content: (Unit: mg/kg)

California Proposition 65- Superior Court of California- County of Alameda Case No. RG 10-514803

Test method: RTS-ZY-008 As per Metal - CPSC-CH-E1001-08.3; Nonmetal - CPSC-CH-E1002-08.3; Surface coating - CPSC-CH-E1003-09.1, Was analyzed by flame atomic absorption spectrometry(AAS) or Inductively Coupled Plasma Optical Emission Spectrometer (ICP-OES).

Test Number	Item/ component description(S)
A1	(green & transparent) plastic shell
A2	Gray white EVA
A3	Silvery plating metal (nail scissors) (upper & lower & screw)
A4	Silvery plating metal (scissors) (handle & blade & screw)
A5	Silvery plating metal (file)
A6	Silvery plating metal (nail knife)
A7	(pink & green & blue) plastic brush handle
A8	(pink & green & blue) pumice stone
A9	(pink & green & blue) foam toe separators

Test item	Test Number	MDL	Test Result	Maximum permissible limit	Conclusion
Cadmium (Cd)	A1▲	5	N.D.	300	PASS
	A2	5	N.D.	300	PASS
	A3▲	5	N.D.	300	PASS
	A4▲	5	9	300	PASS
	A5	5	N.D.	300	PASS
	A6	5	N.D.	300	PASS
	A7▲	5	N.D.	300	PASS
	A8▲	5	N.D.	300	PASS
	A9▲	5	N.D.	300	PASS

Note:

- 1) MDL=Method Detection Limit.
- 2) N.D. = not detected, less than MDL.
- 3) Product shall not exceed 300 ppm (0.030%) total cadmium content.
- 4)“▲” = This data is obtained from composite testing on more than one materials or shapes, it is possible that result obtained from individual testing on any one of the materials or shapes is substantially higher. Please be cautious when using this data for compliance evaluation.

Zhejiang RTS Test Co., LTD.

Phone: +86(0)579-85640080.

Email: ruiyi-9@zj-rt.com

[Http://www.rtslab.com](http://www.rtslab.com)

浙江省义乌市稠江街道英才创业园B区7幢2-4层,
2-4f, Building 7, Block B, Ying cai Business Park,
Choujiang Street, Yiwu, Zhejiang.

This Test Report is issued by the Company subject to its General Conditions of Service printed overleaf or available on request. Attention is drawn to the limitation of liability ,indemnification and jurisdictional policies defined therein .The results shown in this Test report refer only to the sample(s) tested unless otherwise stated This test report shall not be reproduced ,except in full, without written approval of the Company. If in doubt, please write an email.

**C. Phthalates Content test:**(Unit: mg/kg)

California Proposition 65- Superior Court of California- County of Alameda Case No.BG07350969 / RG08367601 / RG07351032 / RG08378050 and CPSIA.

Test method: CPSC-CH-C1001-09.4, was analyzed by Gas Chromatograph-Mass Spectrometer (GC-MS).

Test Number	Item/ component description(s)
A1	(green & transparent) plastic shell
A2	Gray white EVA
A7	(pink & green & blue) plastic brush handle
A9	(pink & green & blue) foam toe separators

Test Item(s)	CAS No.	Results				MDL	Limit value
		A1▲	A2	A7▲	A9▲		
Dibutyl Phthalate(DBP)	84-74-2	N.D.	N.D.	N.D.	N.D.	50	1000
Benzylbutyl Phthalate(BBP)	85-68-7	N.D.	N.D.	N.D.	N.D.	50	1000
Bis-(2-ethylhexyl)Phthalate(DEHP)	117-81-7	N.D.	N.D.	N.D.	N.D.	50	1000
Diisodecyl Phthalate(DIDP)	26761-40-0	N.D.	N.D.	N.D.	N.D.	50	1000
Di-iso-nonyl Phthalate(DINP)	28553-12-0	N.D.	N.D.	N.D.	N.D.	50	1000
Di-n-hexyl phthalate(DNHP)	84-75-3	N.D.	N.D.	N.D.	N.D.	50	1000
Conclusion:	-	PASS	PASS	PASS	PASS	-	-

Note:

- 1) N.D. = not detected, less than MDL.
- 2) MDL = Method Detection Limit.
- 3)“▲” = This data is obtained from composite testing on more than one materials or shapes, it is possible that result obtained from individual testing on any one of the materials or shapes is substantially higher. Please be cautious when using this data for compliance evaluation.

----- End of Report -----

Zhejiang RTS Test Co., LTD.

Phone: +86(0)579-85640080.

Email: ruiyi-9@zj-rt.com[Http://www.rtslab.com](http://www.rtslab.com)

浙江省义乌市稠江街道英才创业园B区7幢2-4层.
2-4f, Building 7, Block B, Ying cai Business Park,
Choujiang Street, Yiwu, Zhejiang.

This Test Report is issued by the Company subject to its General Conditions of Service printed overleaf or available on request. Attention is drawn to the limitation of liability ,indemnification and jurisdictional policies defined therein .The results shown in this Test report refer only to the sample(s) tested unless otherwise stated This test report shall not be reproduced ,except in full, without written approval of the Company. If in doubt, please write an email.